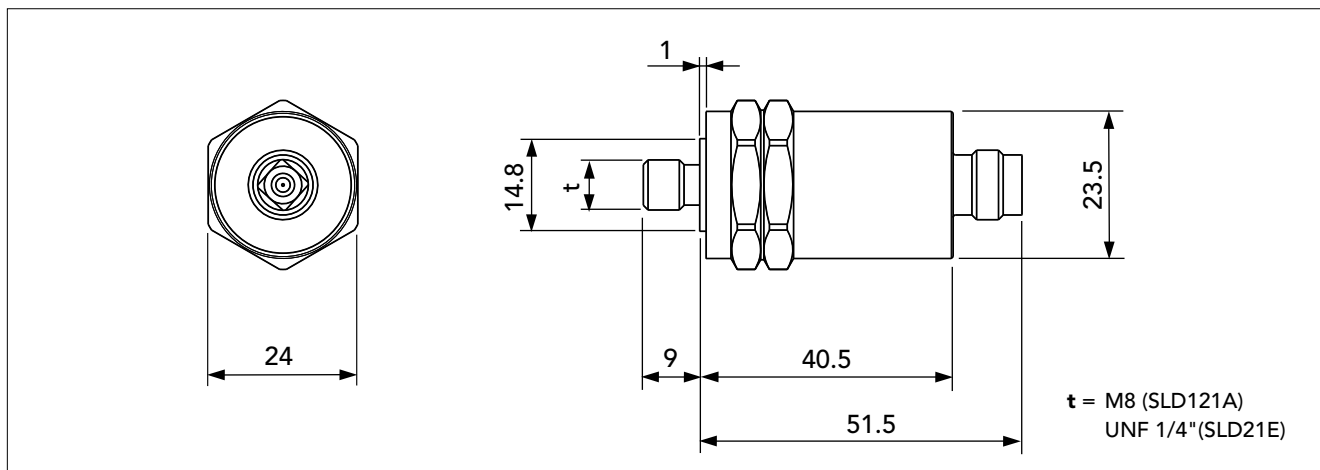
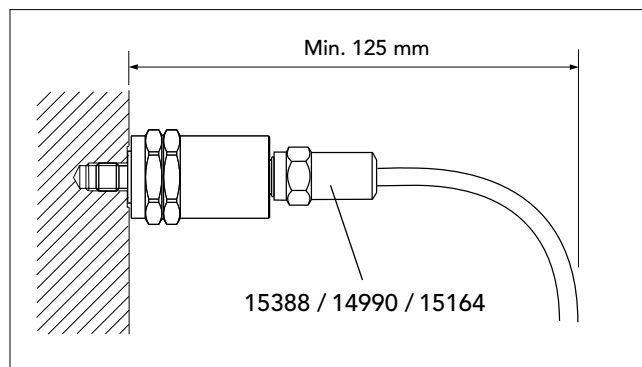


Vibration Transducer SLD121 A / SLD121 E



The vibration transducers SLD121A and SLD121E are piezo-electric accelerometers of compression type with built-in preamplifier, designed for vibration monitoring of industrial machinery. The electrical signal is isolated from the transducer housing.

The transducer is mounted against a smooth, flat surface on the machine. SLD121A has thread size M8 and SLD121E has thread size UNF 1/4". The transducer is connected via a coaxial cable (SPM 90005-L or 90267-L) with SMB connector.



Technical data

Nominal sensitivity, main axis: 1.2 mV/m/s² * = 12 mV/g

Transverse sensitivity: max. 10%

Typical base strain sensitivity: 0.01 m/s²/m strain

Linear frequency range: 2 to 1000 Hz (±1 dB)

Max. peak acceleration: 600 m/s² = 60 g

Settling time: 3 sec

Bias point: 6 to 9 V (typical 8 V)

Temperature range: -40° C to +125° C
(-40° F to 260° F)

Power requirements: 12 to 24 V, 2 to 5 mA

Casing: Stainless acid proof steel

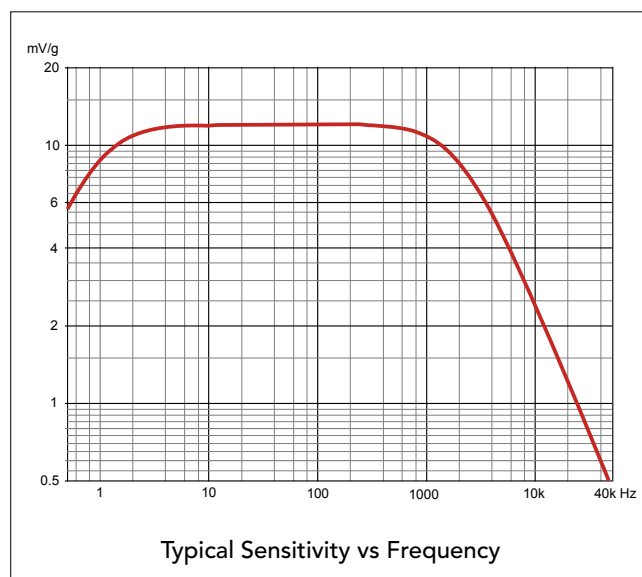
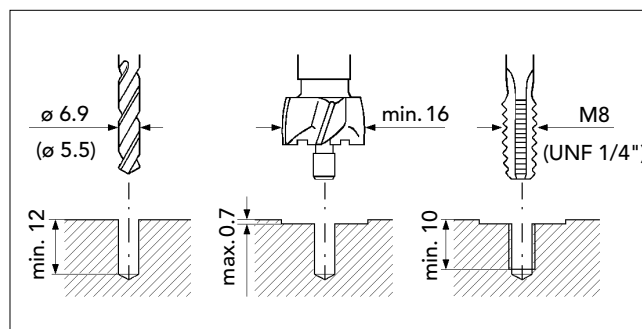
Sealing: IP 67 together with connector SPM 15388, 14990 or 15164

Isolation: Case isolated, > 1 Mohm

Torque limit: 10 Nm (7.4 lbf·ft)

Weight: 110 grams (4 oz)

Connector type: SMB



Mounting tools

81027 Holder for counterbore

81057 Counterbore, diameter 20 mm

81030 Pilot for UNF 1/4"

81031 Pilot for M8

To drill the mounting hole, use drill bit 6.9 mm (M8) or 5.5 mm (UNF 1/4"). Torque the transducer with a 24 mm torque wrench.



SPM Instrument AB • Box 504 • SE-645 25 Strängnäs • Sweden

Tel +46 152 22500 • Fax +46 152 15075 • info@spminstrument.se • www.spminstrument.com

Technical data are subject to change without notice.
ISO 9001 certified. © Copyright SPM 2007-05. TD-200. B

